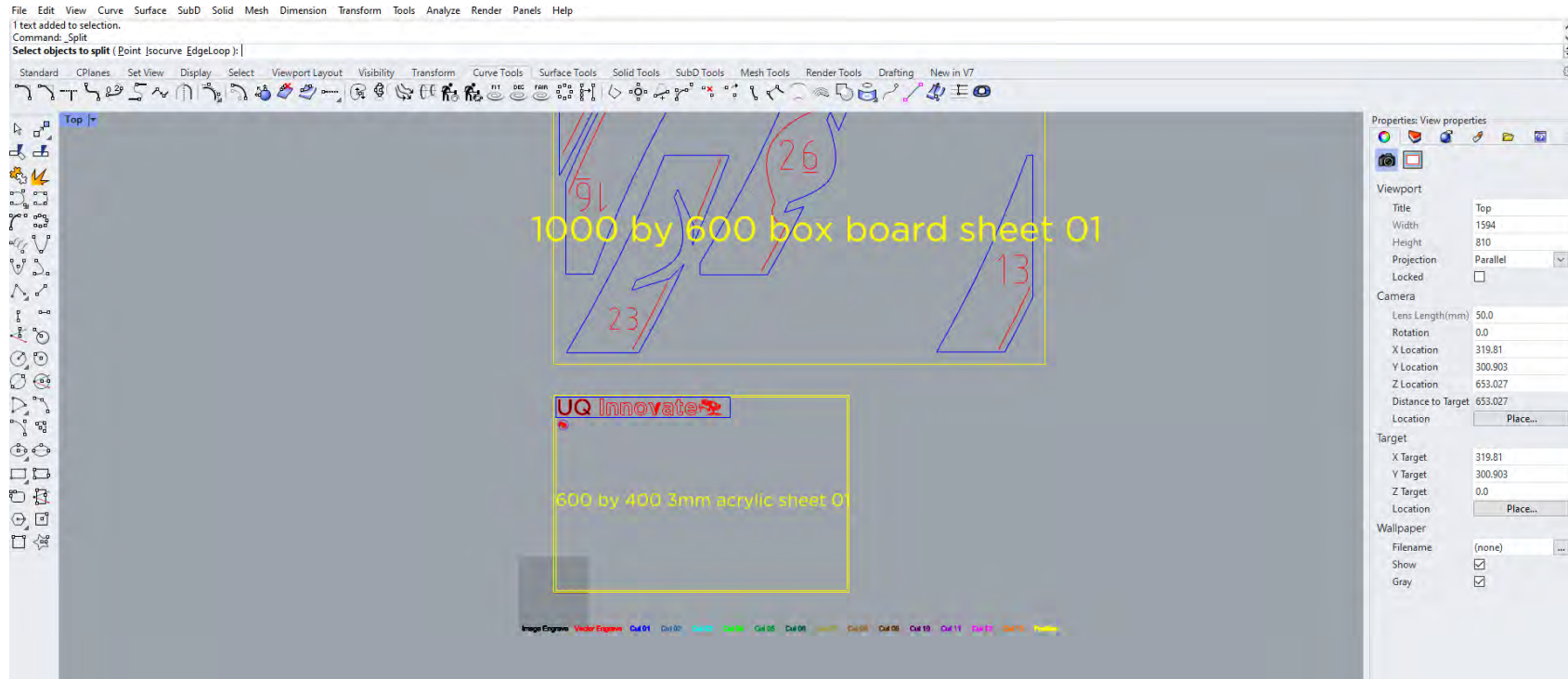
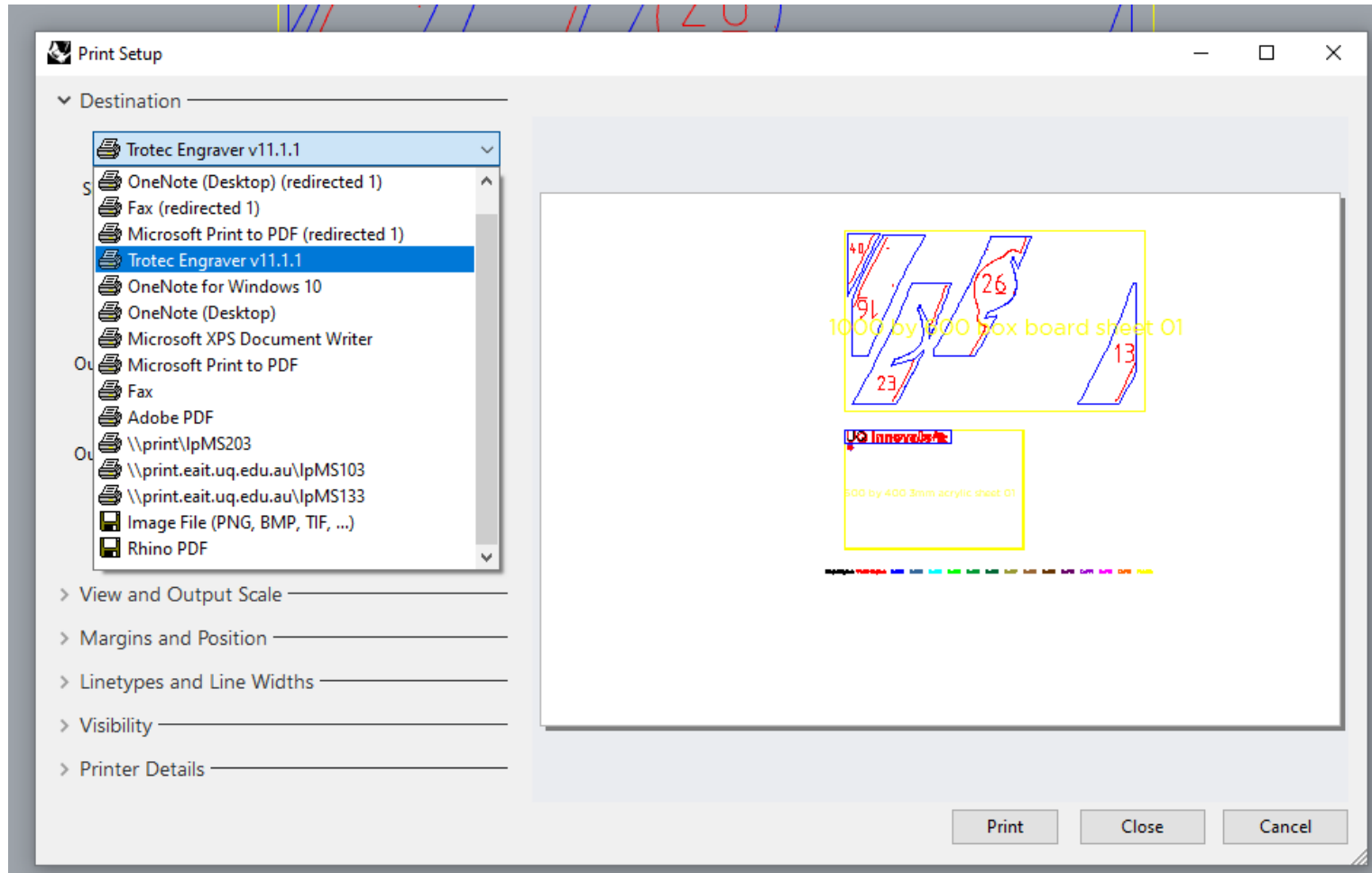


## Plotting to Trotec Job Control

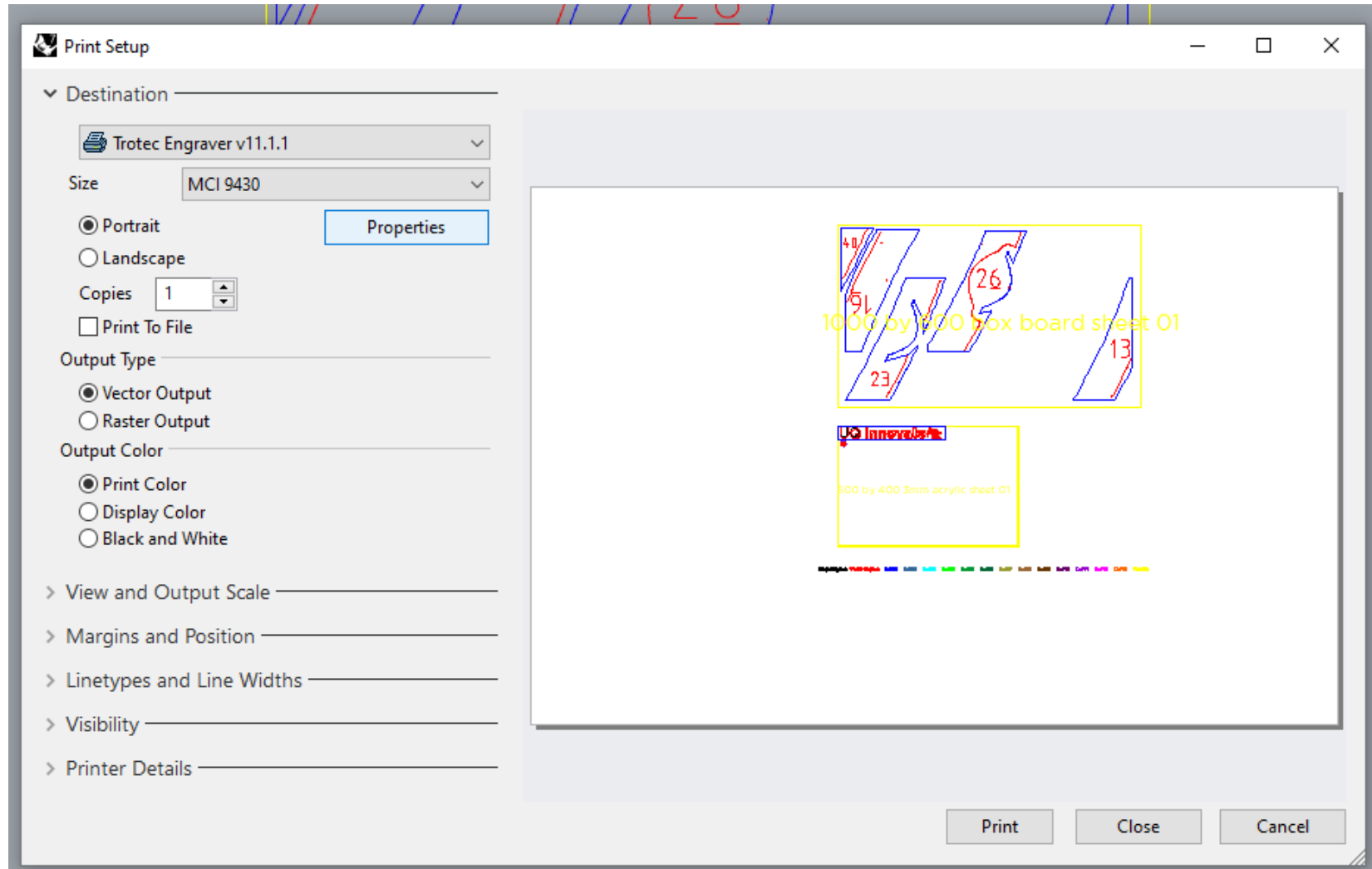
When your Rhino6 3dm files are ready to plot use Ctrl+P from top view.



You may have to select "Trotec Engraver" Under destination.

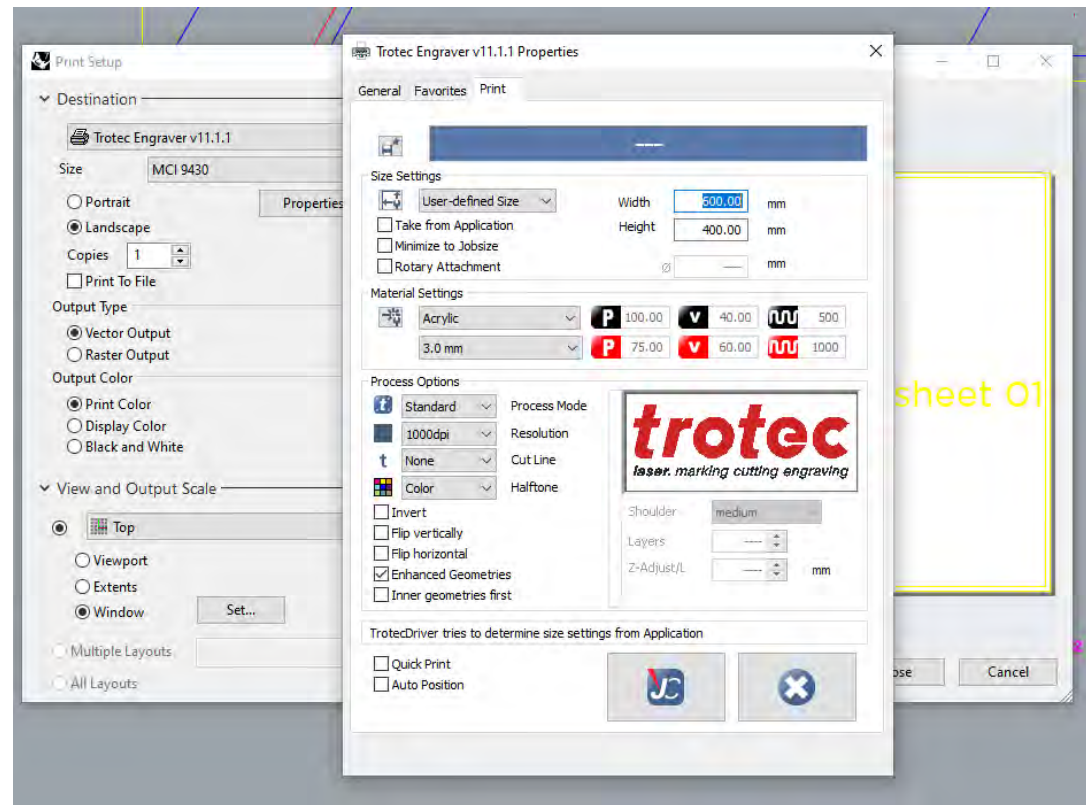


Click the "Properties" button.

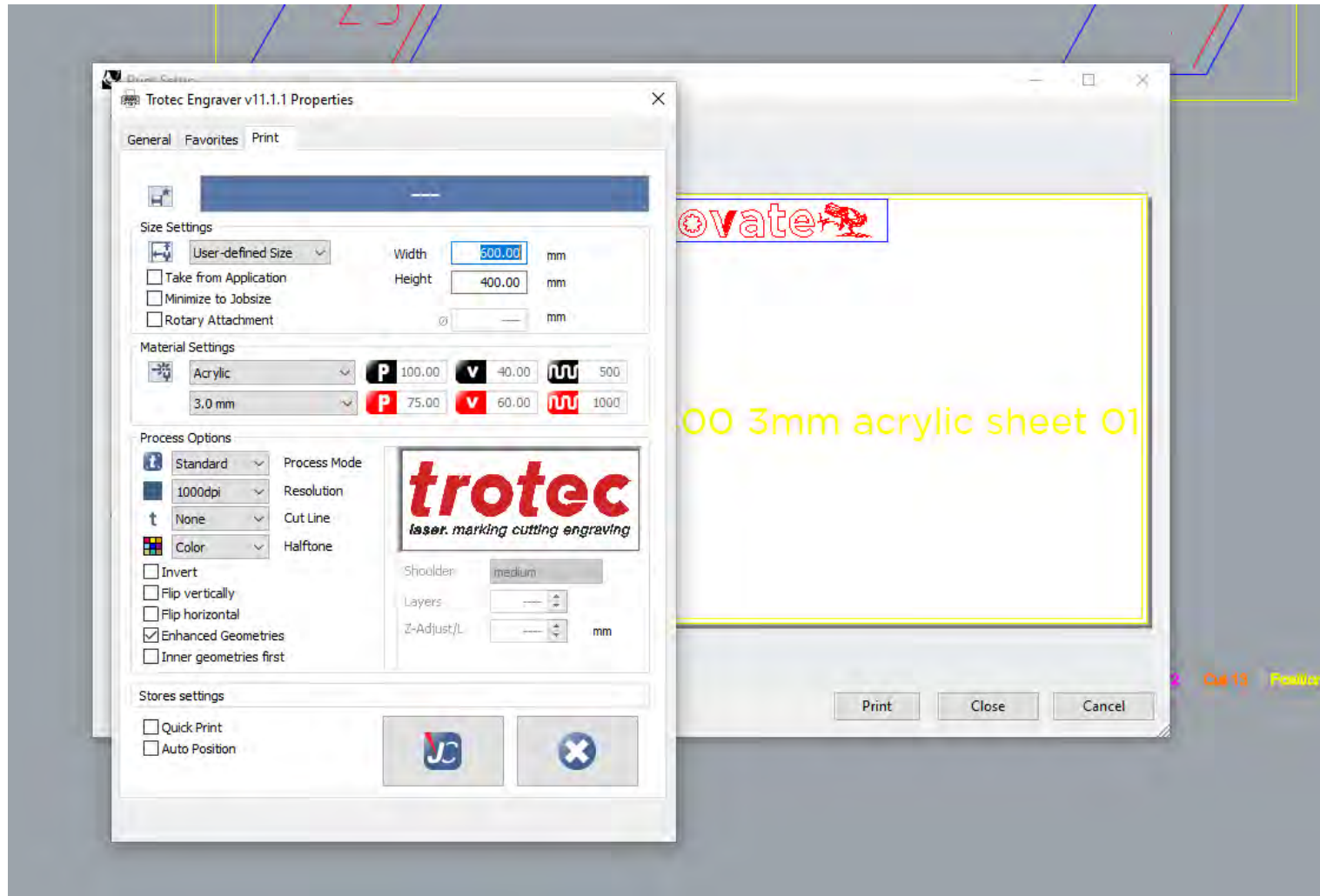


CREATE CHANGE

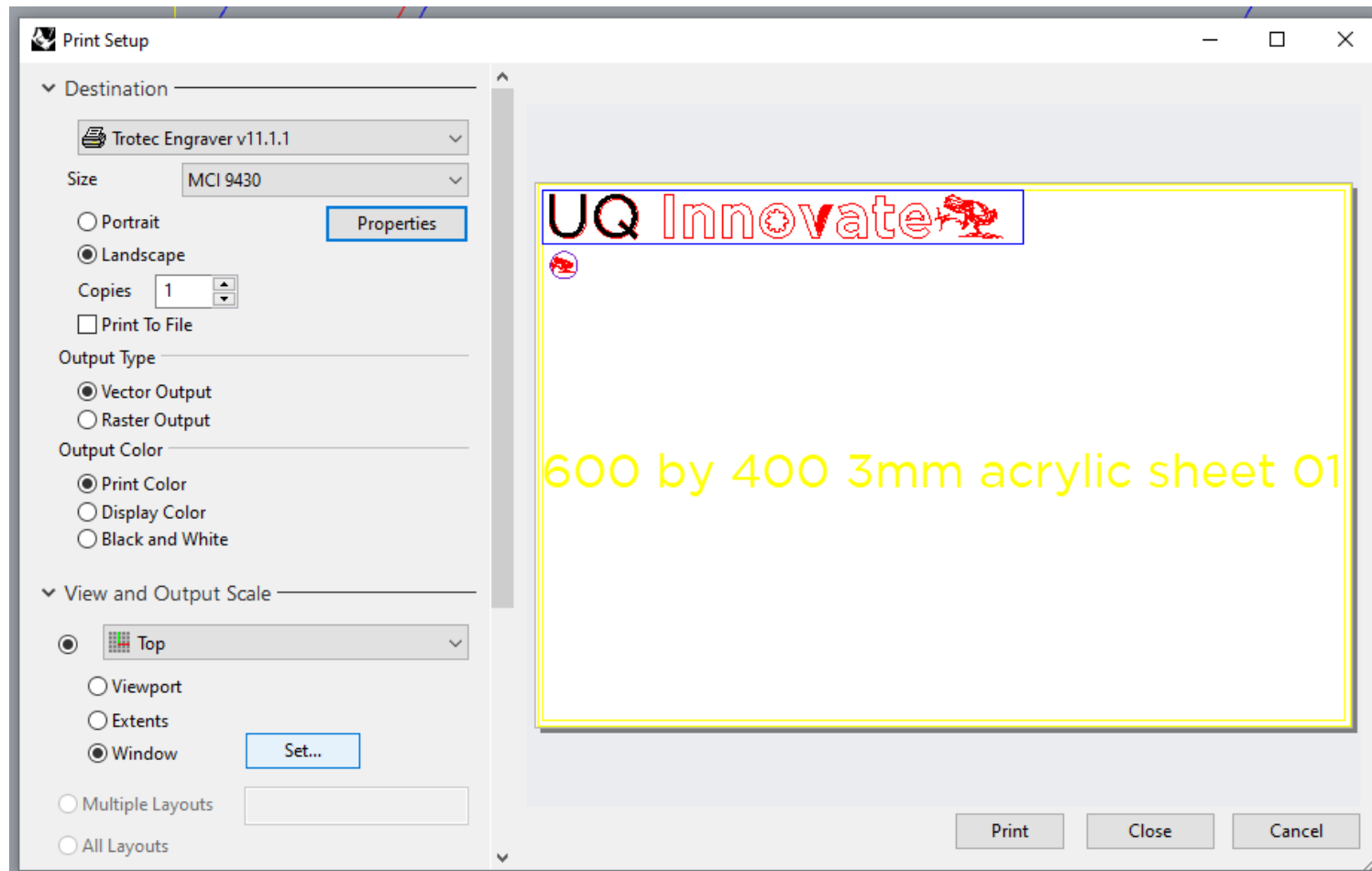
Under “Size Setting” match the Width and Height to your desired materials dimensions this should match the outer yellow rectangle you created earlier (landscape). Select your desired “Material Settings” I have chosen Basic\Acrylic 3.0 mm. Under “Process Options” make sure that Process Mode=Standard, Resolution=1000dpi, Cut Line=None and that Halftone=Color also ensure that only Enhanced Geometries is ticked  IFF you need your geometries flipped or inverted it would be preferred that this is done in CAD using the MIRROR command to prevent the next person using the laser being inconvenienced.



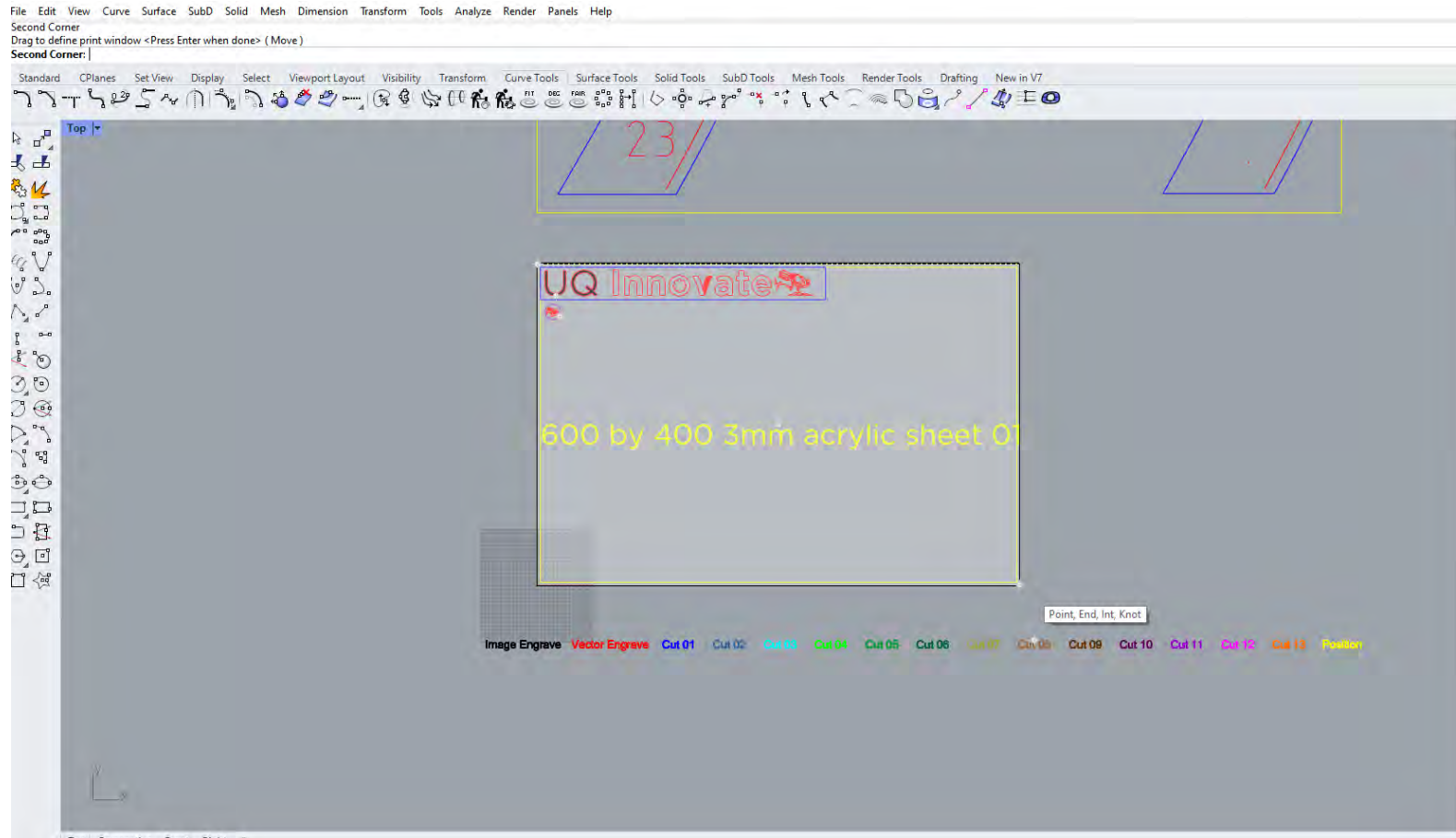
Now click the “JC” button in the Trotec menu.



Under View and Output Scale select "Window" "Set"



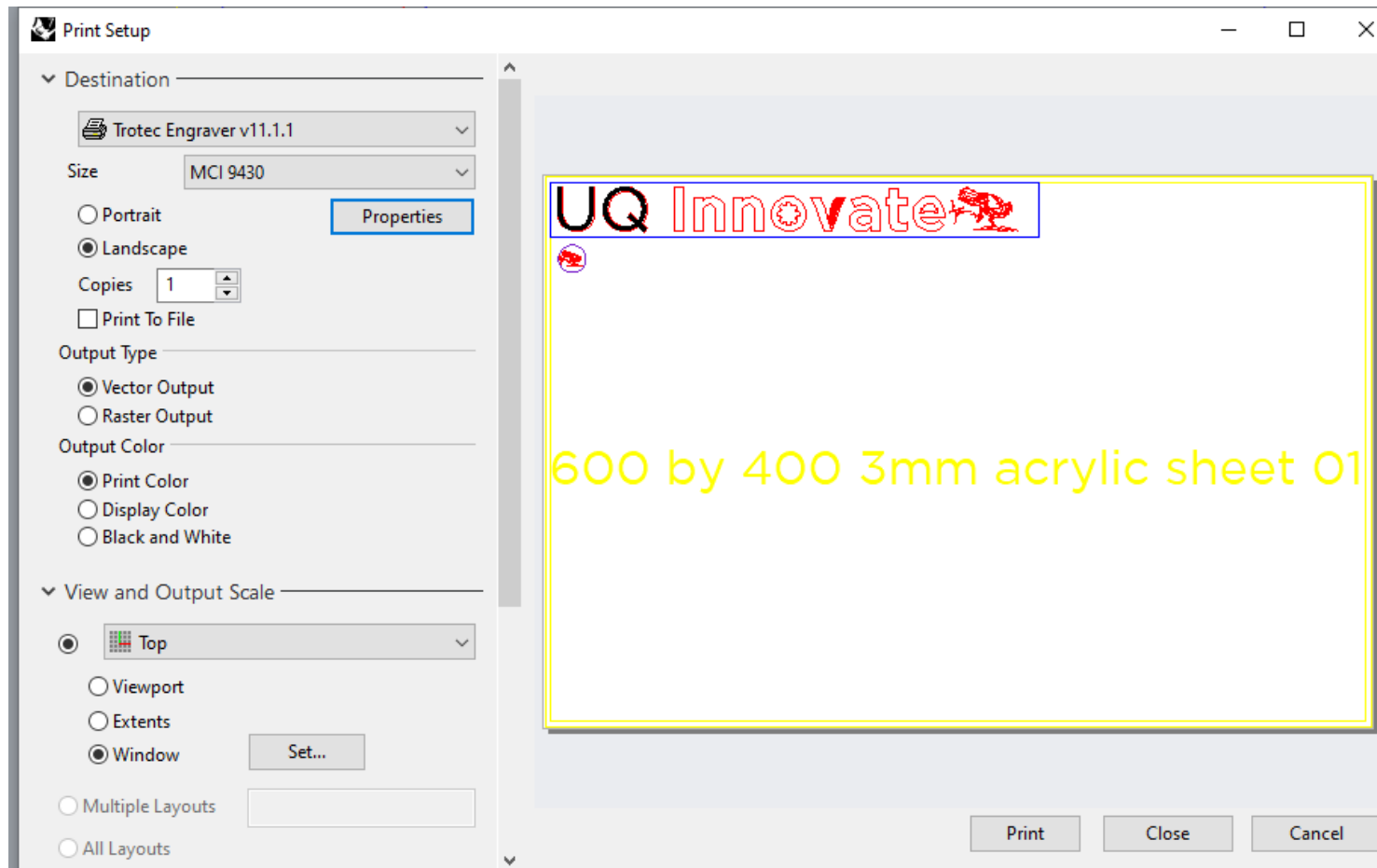
This will bring you back to model space so that you can portal select the material boundary yellow rectangle that you wish to send to the laser. This means you can use the one file to print many different material sheets from.



If you have the same size material each time you can use the “Centre” control point of your material rectangle.


CREATE CHANGE

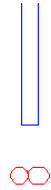
Always check plot preview before confirming the print just to check everything is correct, believe me it's worth it.



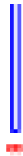
Normally you will want it set to “Vector Output” and “Print Color” Once you select “Print” you should be prompted to name your file



Once your file has turned up in the Job Control que you can drag it onto the work plate and click the eyeball button () to inspect the file. Check that your vector geometry has come through correctly and not as a bit map.



Vector Geometry with correct line weights



Vector Geometry with incorrect line weights.



Rasters should be the only pixelated images.

CREATE CHANGE

If you click the “Update” button you will get an estimation of laser time, if the time is excessively long you may want to rethink the complexity of what you are sending to the laser.

Congratulations you are now ready to use the laser.

