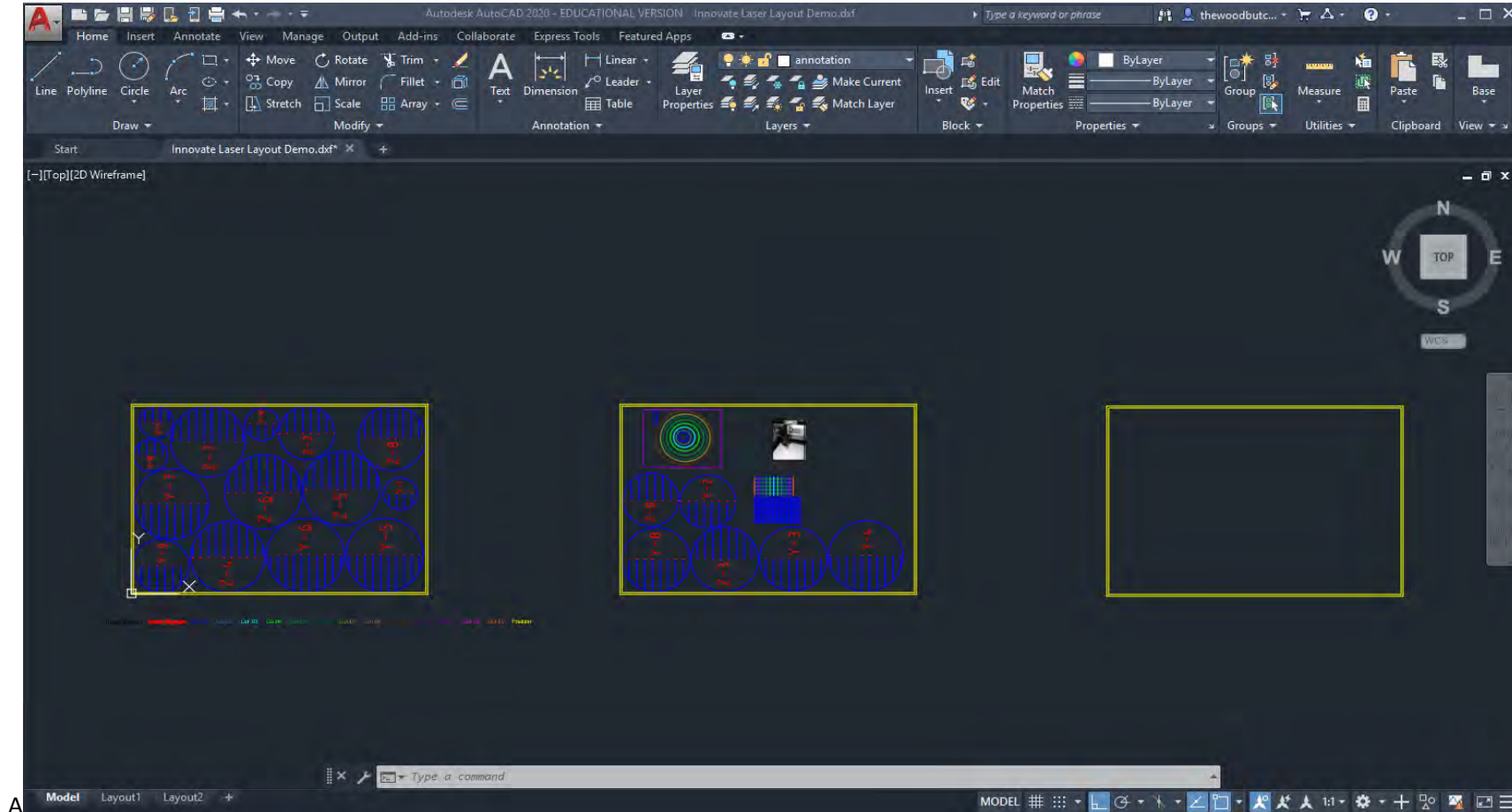


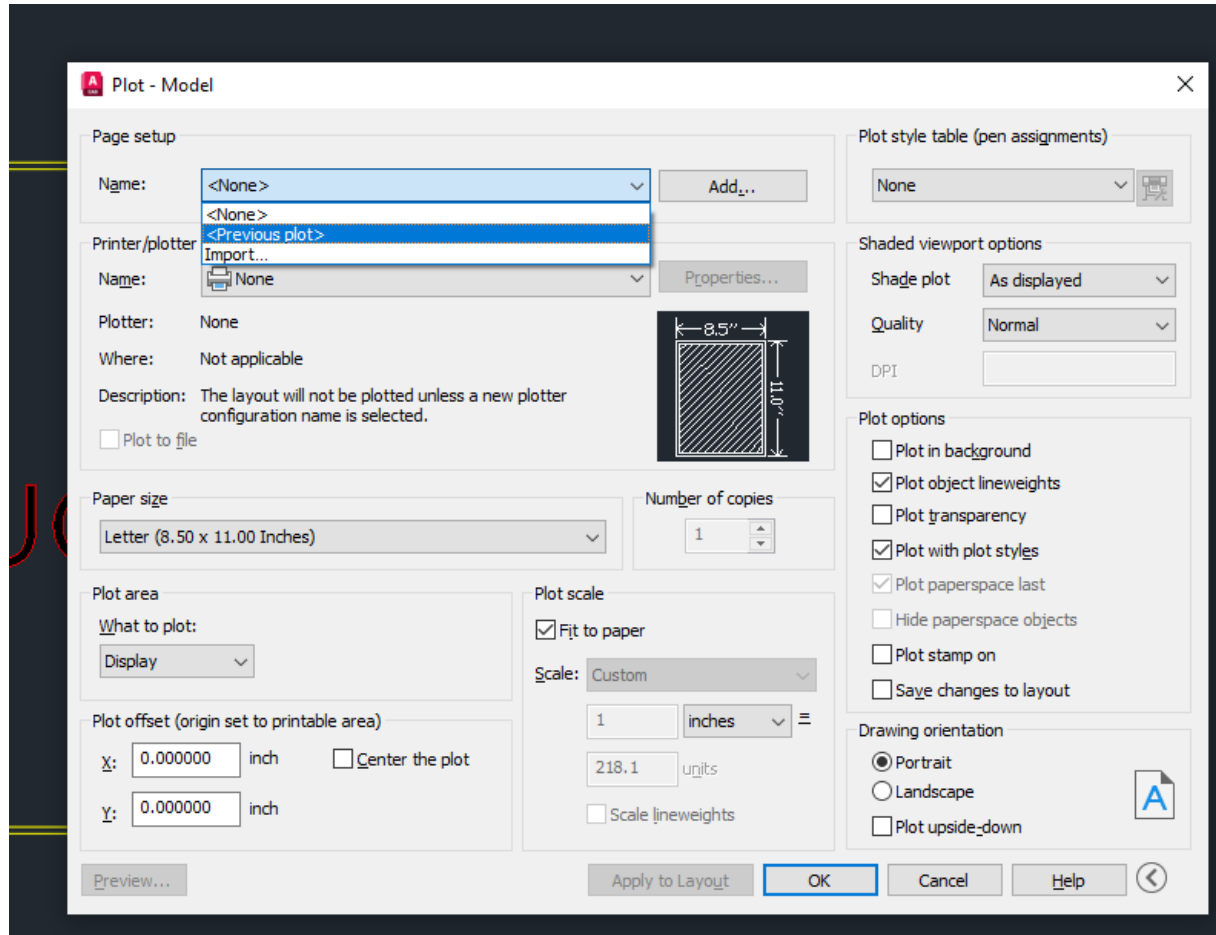
## Plotting to Trotec Job Control

When your AutoCAD files are ready to plot use **Ctrl+P** from model space.

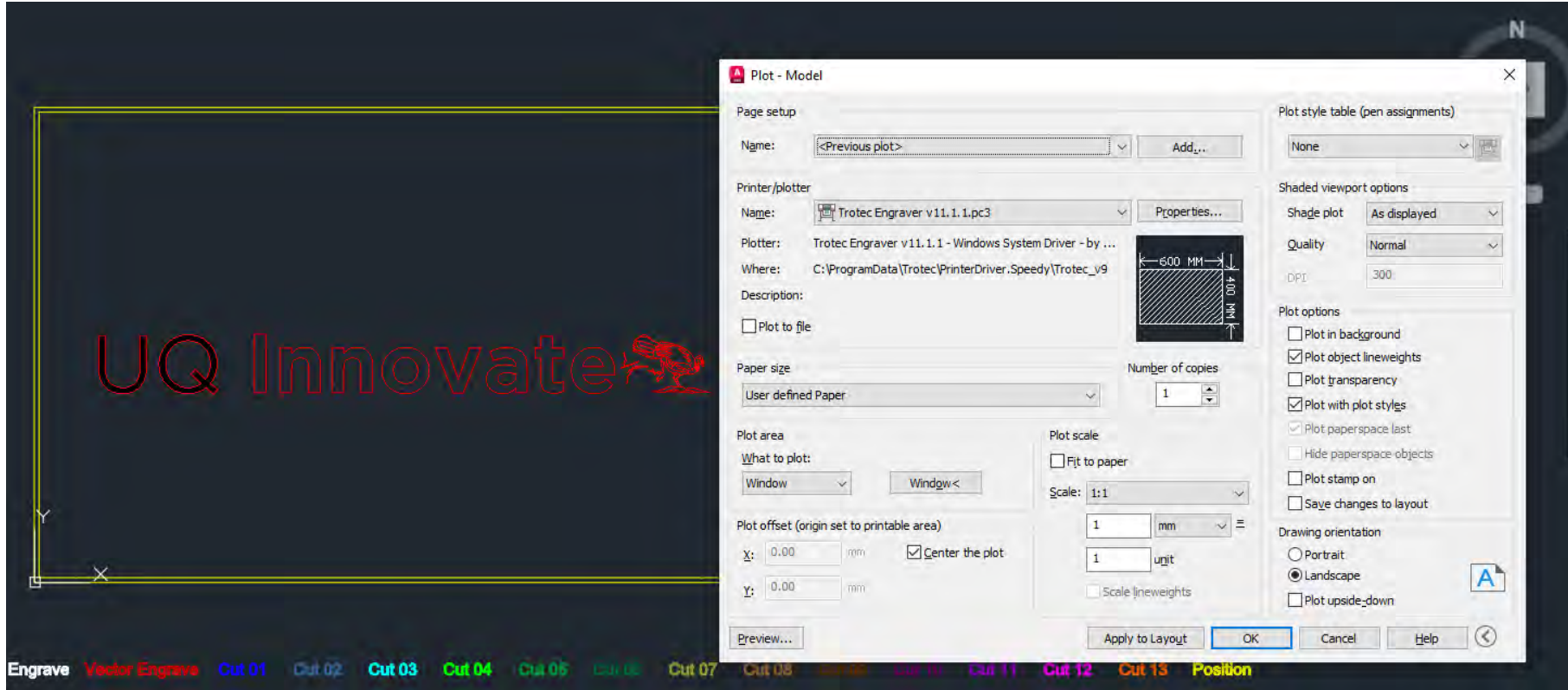


CREATE CHANGE

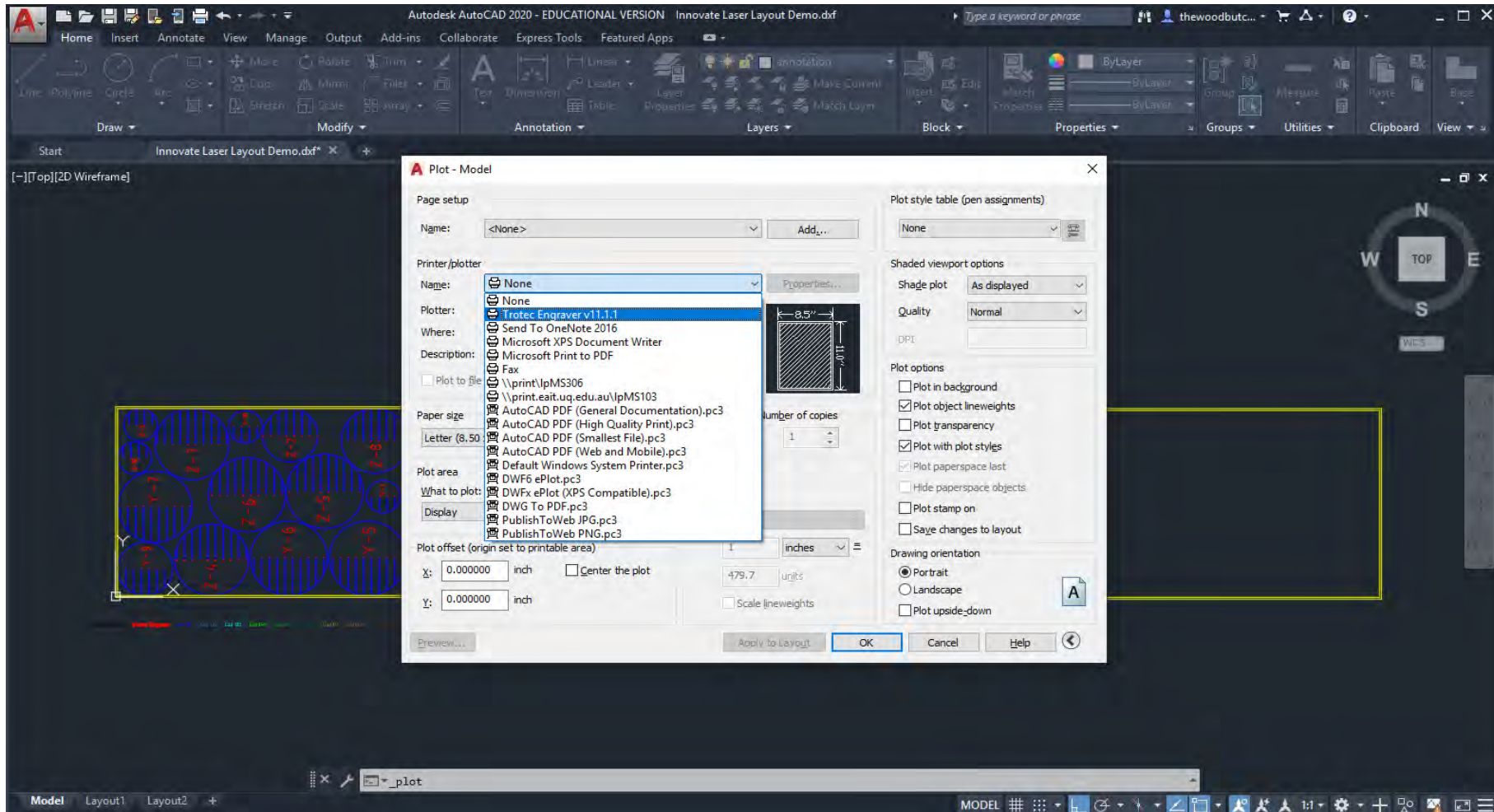
Try using this short cut first by selecting “previous plot” before you must make all the changes manually that follow in this guide.



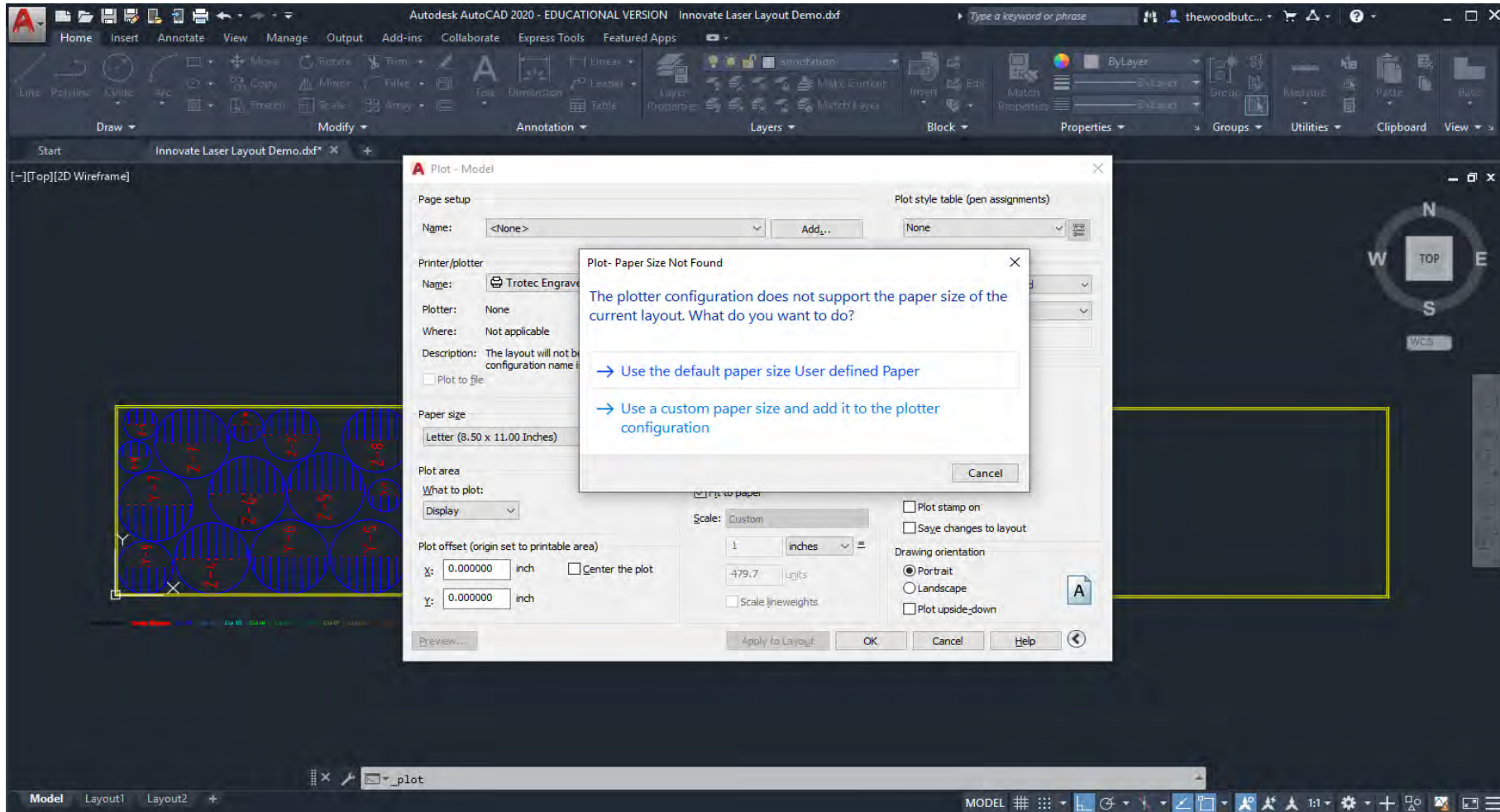
You may even luck out and get exactly what you need.



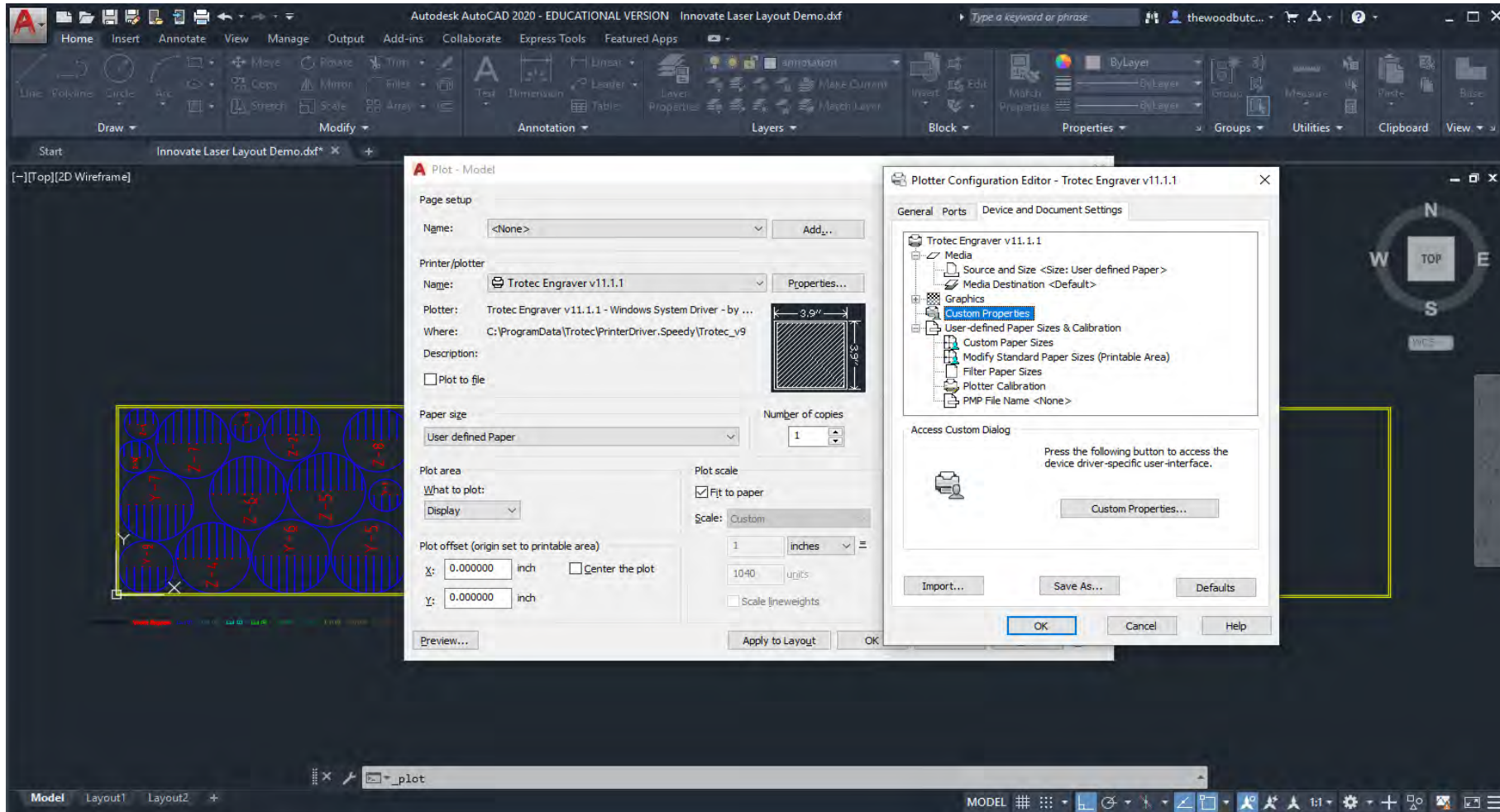
If not, then Under Printer/Plotter select “Trotec Engraver v11.1.1”.



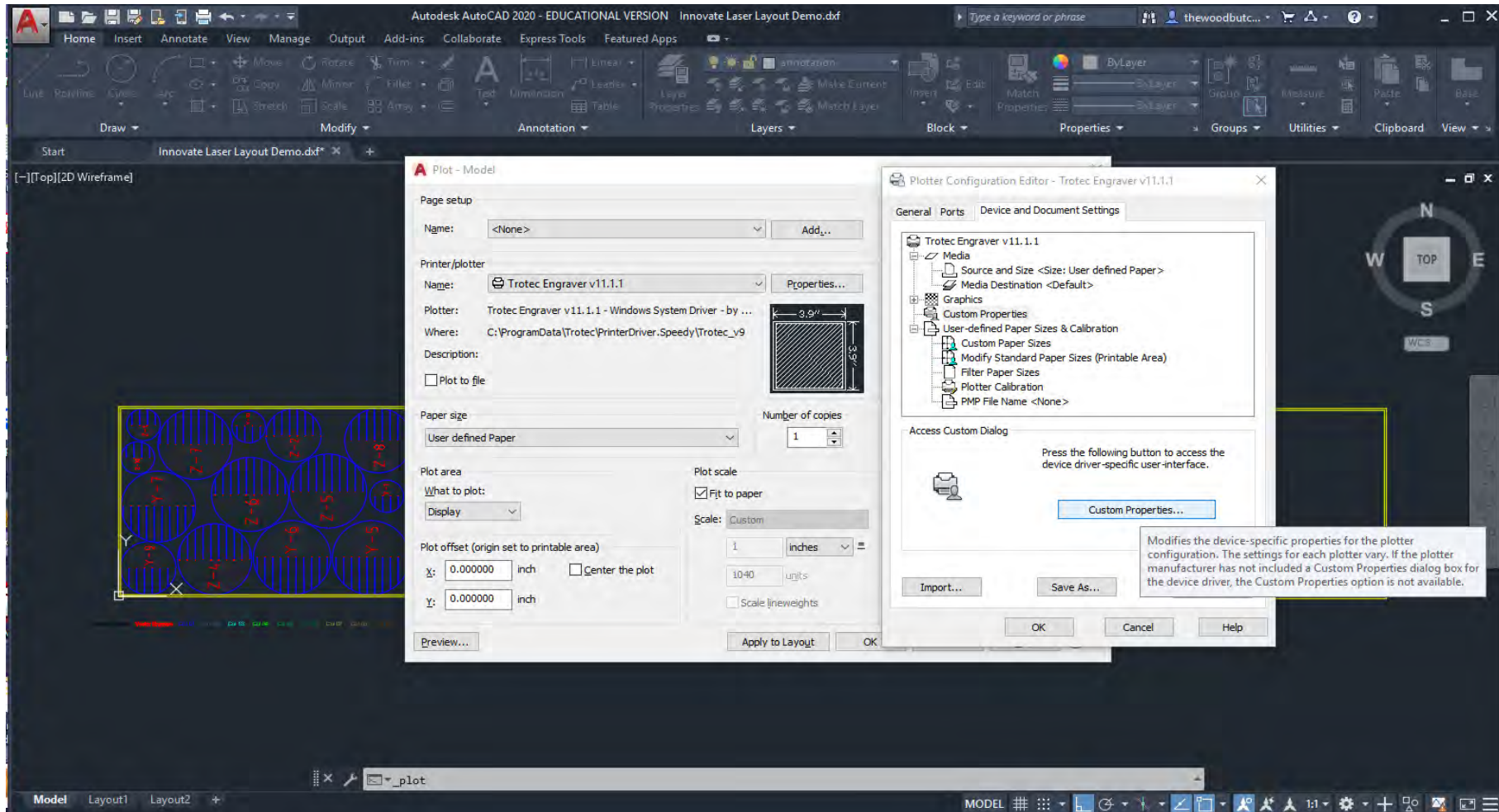
When prompted select “Use the default paper size User defined Paper”.



Click the "Properties" button.

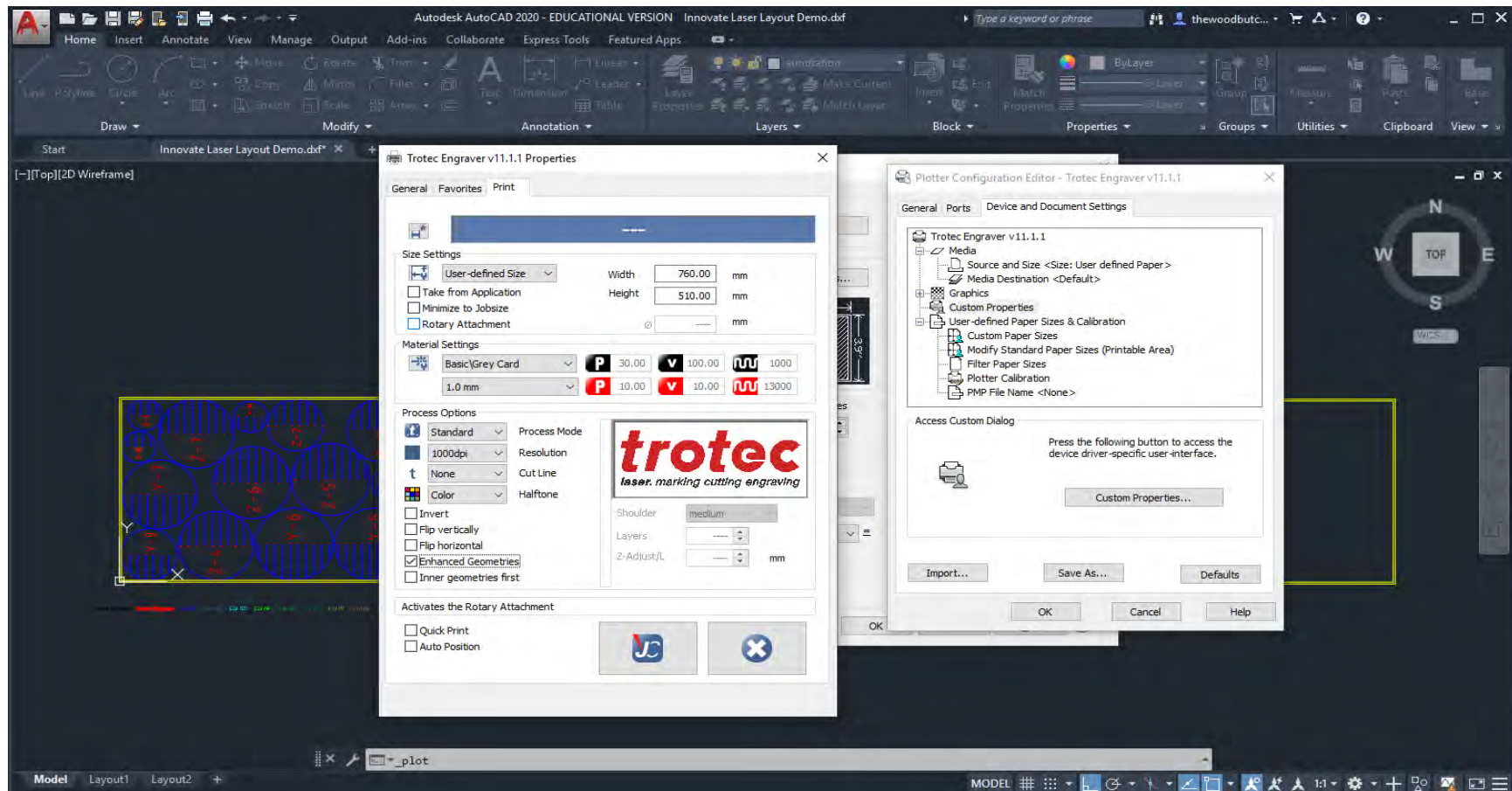


In the “Access Custom Dialog” window click the “Custom Properties” Button.



CREATE CHANGE

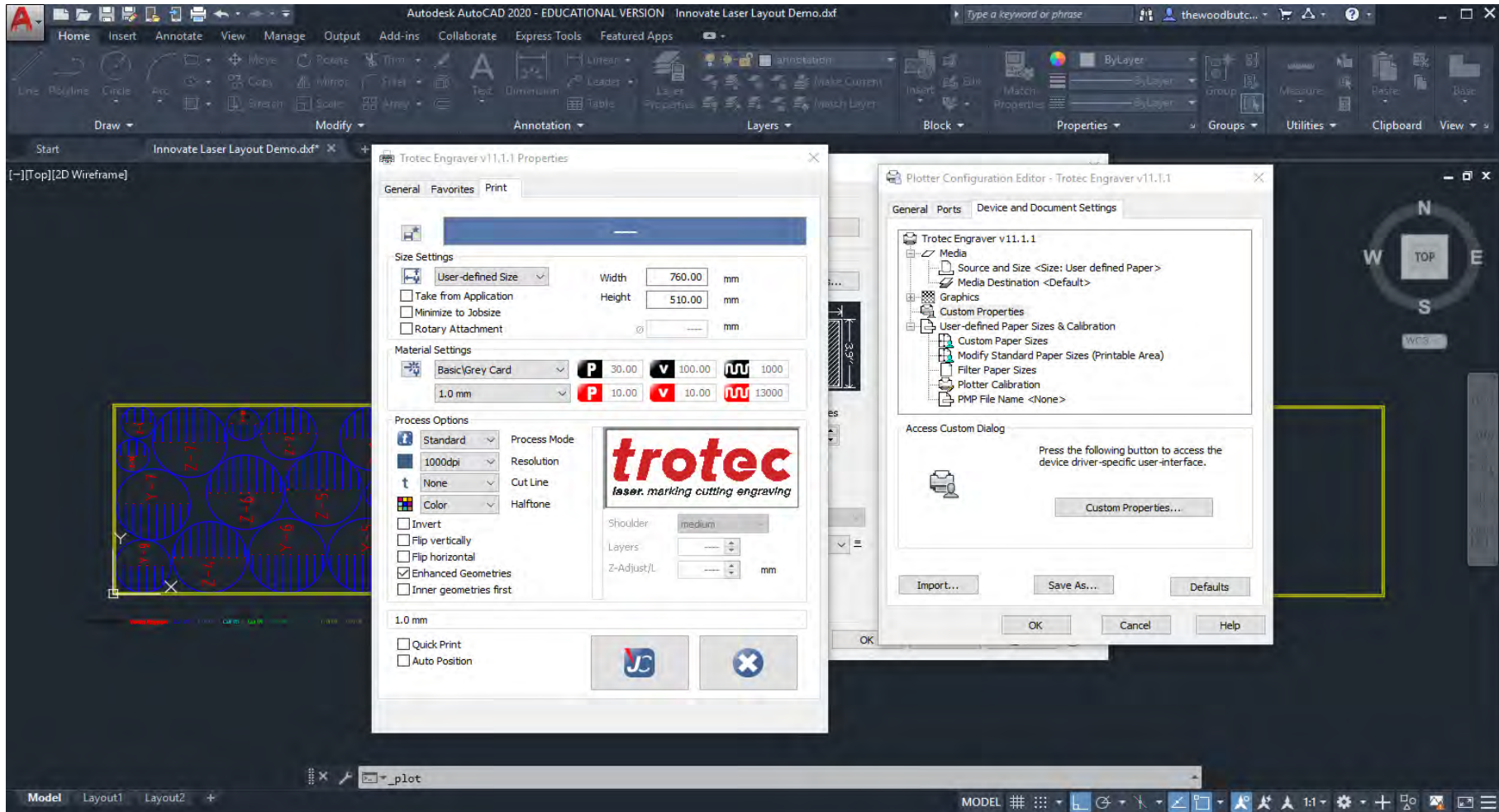
Under “Size Setting” match the Width and Height to your desired materials dimensions this should match the outer yellow rectangle you created earlier (landscape). Select your desired “Material Settings” I have chosen Basic\Grey Card 1.0 mm. Under “Process Options” make sure that Process Mode=Standard, Resolution=1000dpi, Cut Line=None and that Halftone=Color also ensure that only Enhanced Geometries is ticked ✓ IFF you need your geometries flipped or inverted it would be preferred that this is done in CAD using the **MIRROR** command to prevent the next person using the laser being inconvenienced.





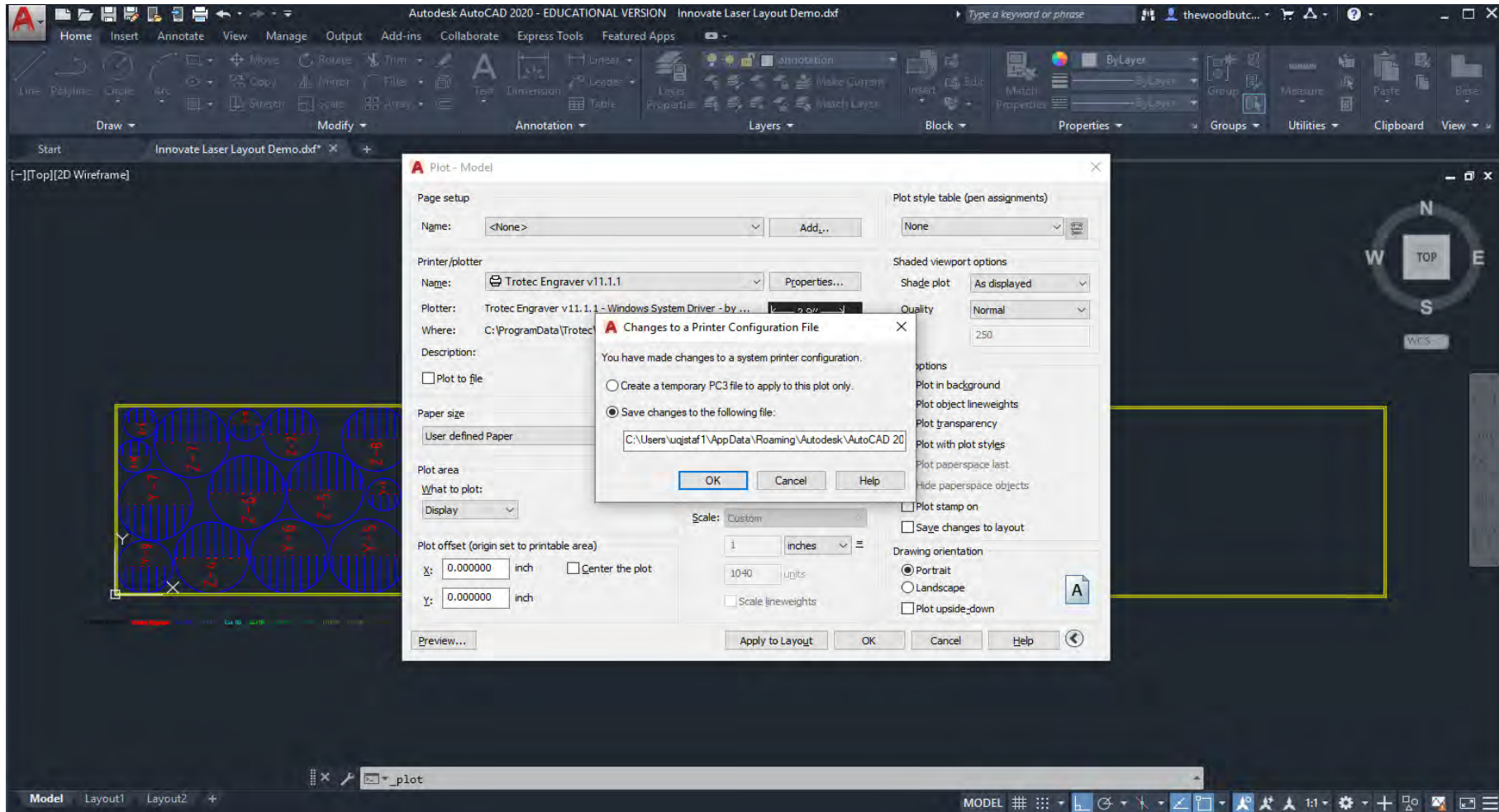
CREATE CHANGE

Now click the “JC” button in the Trotec menu and “OK” in the Plotter Configuration Editor.

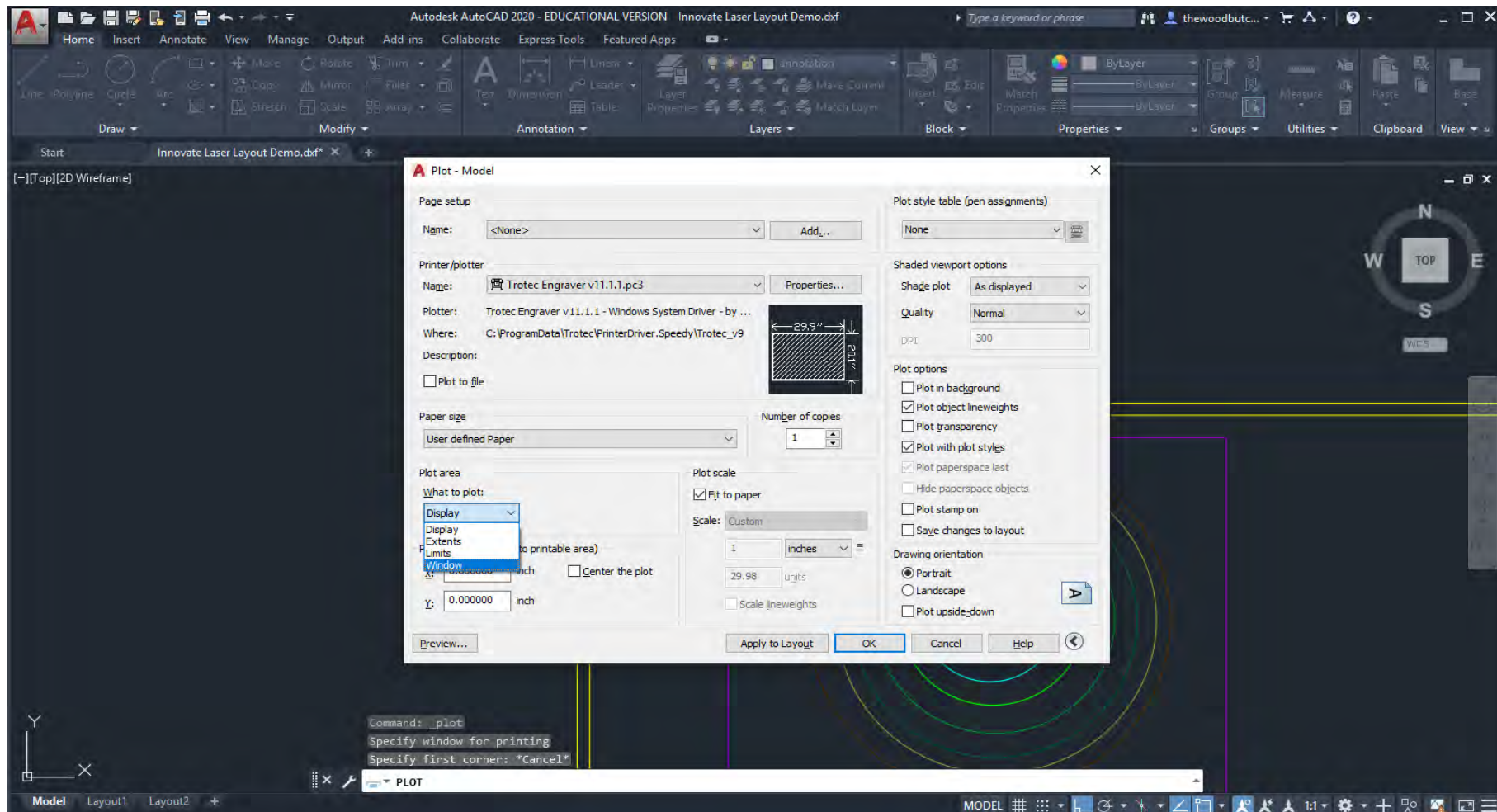


CREATE CHANGE

A window will open prompting you to save changes, please select the bottom option “Save changes to the following file:” leave the branch unchanged and click “OK”

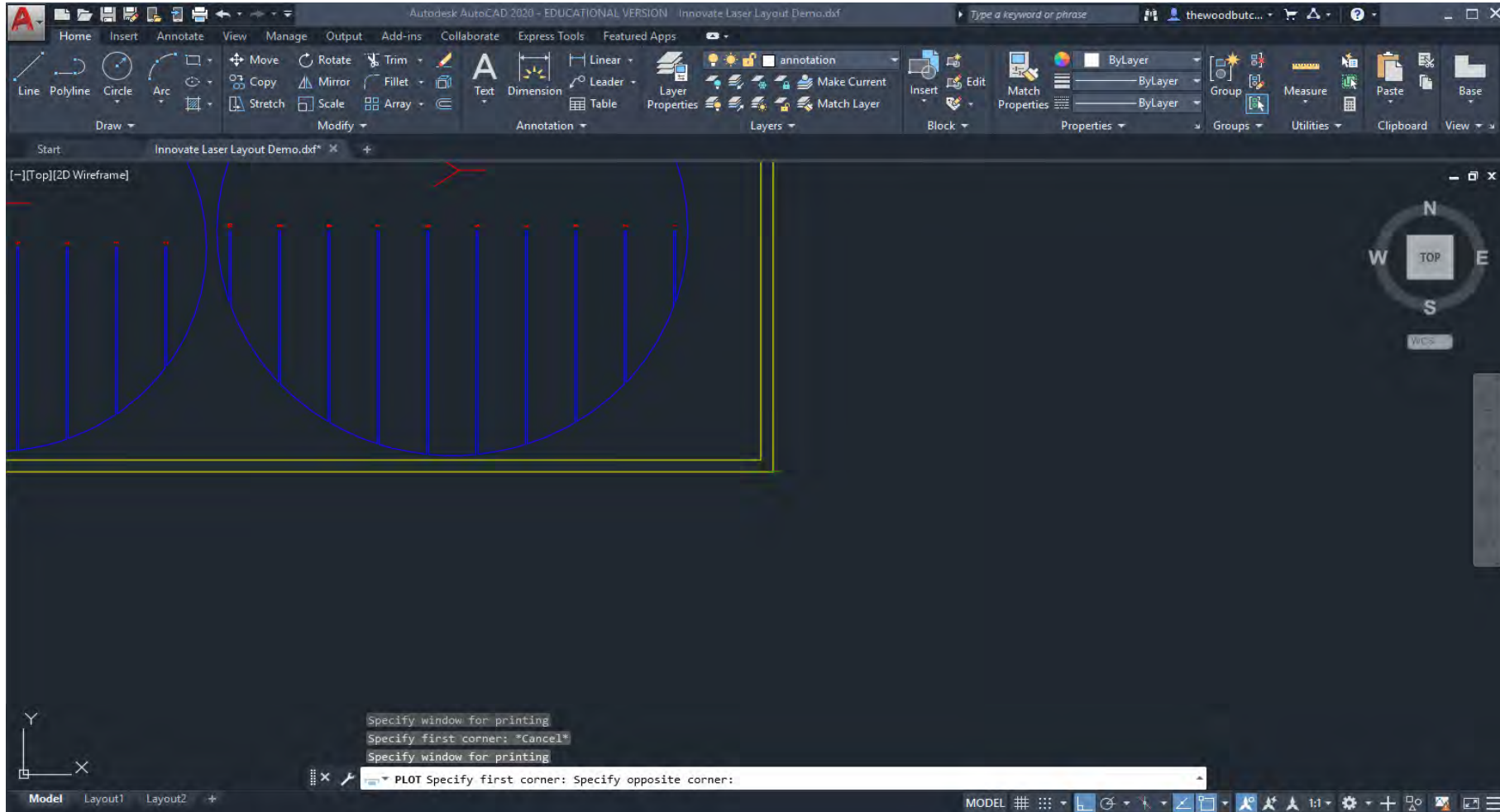


Under Plot Area select "Window"

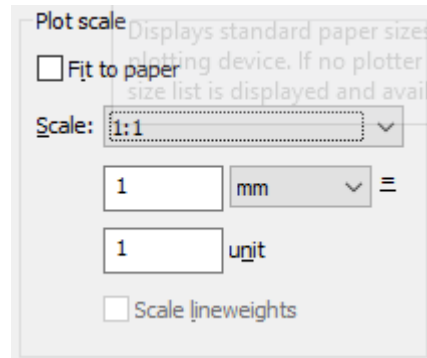


CREATE CHANGE

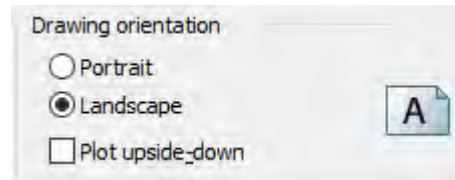
This will bring you back to model space so that you can select the material boundary yellow rectangle that you wish to send to the laser. This means you can use the one file to print many different material sheets from.



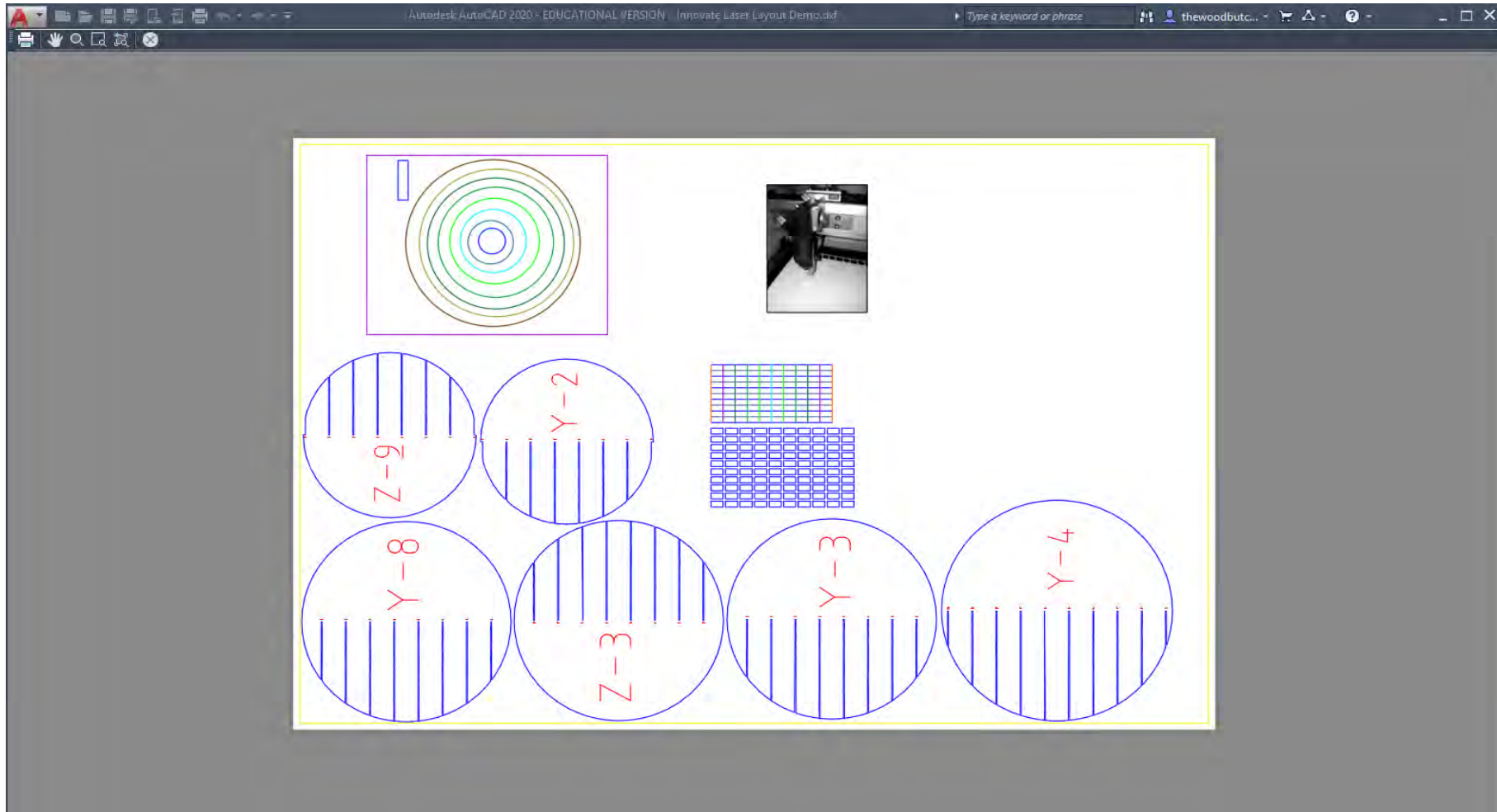
Ensure Plot Scale is 1:1 and in millimetres.



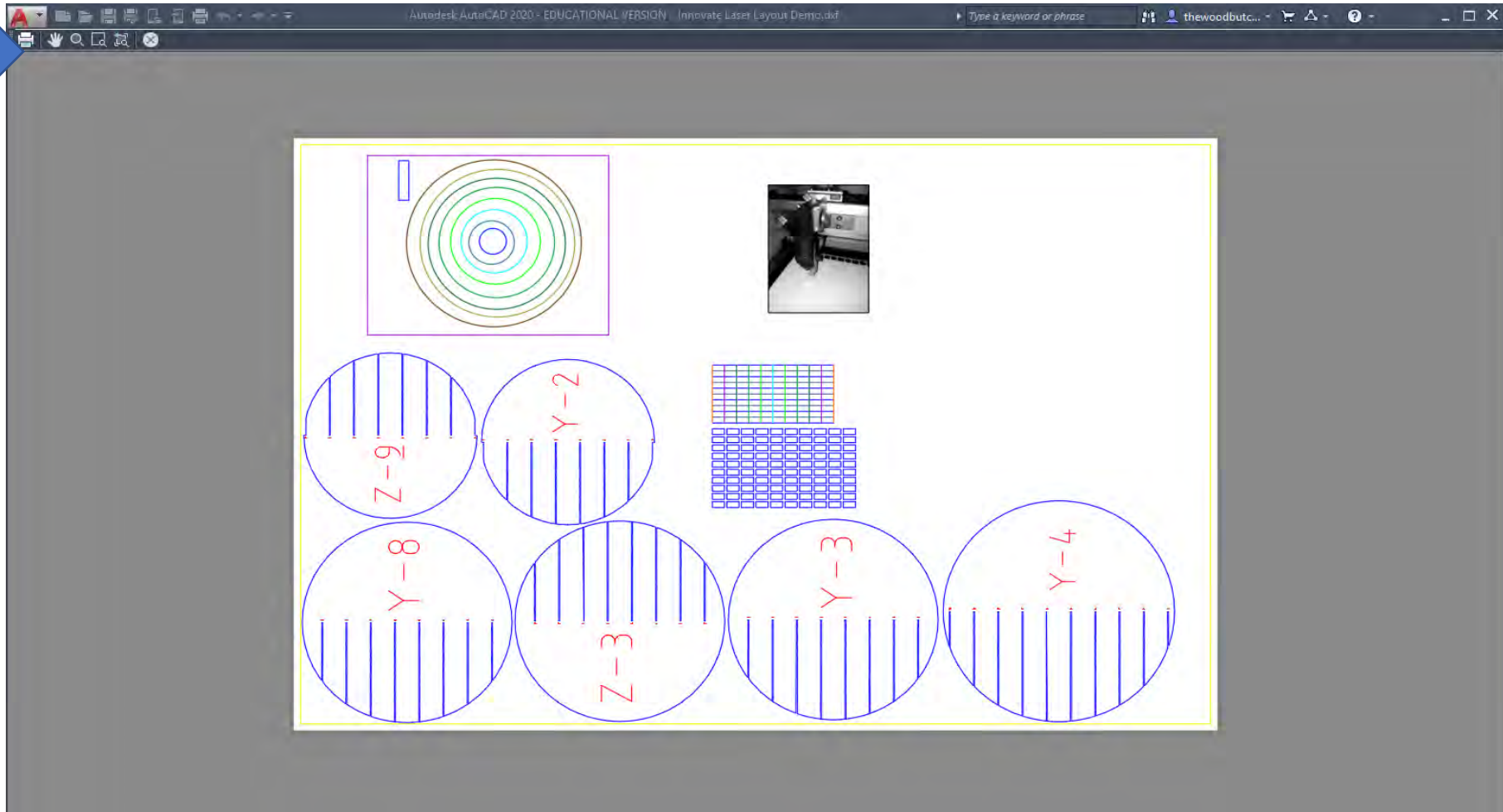
Change Drawing Orientation to match your material (landscape).




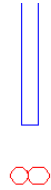
Always check plot preview before confirming the print just to check everything is correct, believe me it's worth it.



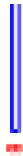
When you're happy with the preview click the Plot button.



Once your file has turned up in the Job Control que you can drag it onto the work plate and click the eyeball button () to inspect the file. Check that your vector geometry has come through correctly and not as a bit map.



Vector Geometry with correct line weights



Vector Geometry with incorrect line weights.



Bit maps should be the only pixelated images.



CREATE CHANGE

If you click the “Update” button you will get an estimation of laser time, if the time is excessively long you may want to rethink the complexity of what you are sending to the laser.

Congratulations you are now ready to use the laser.

